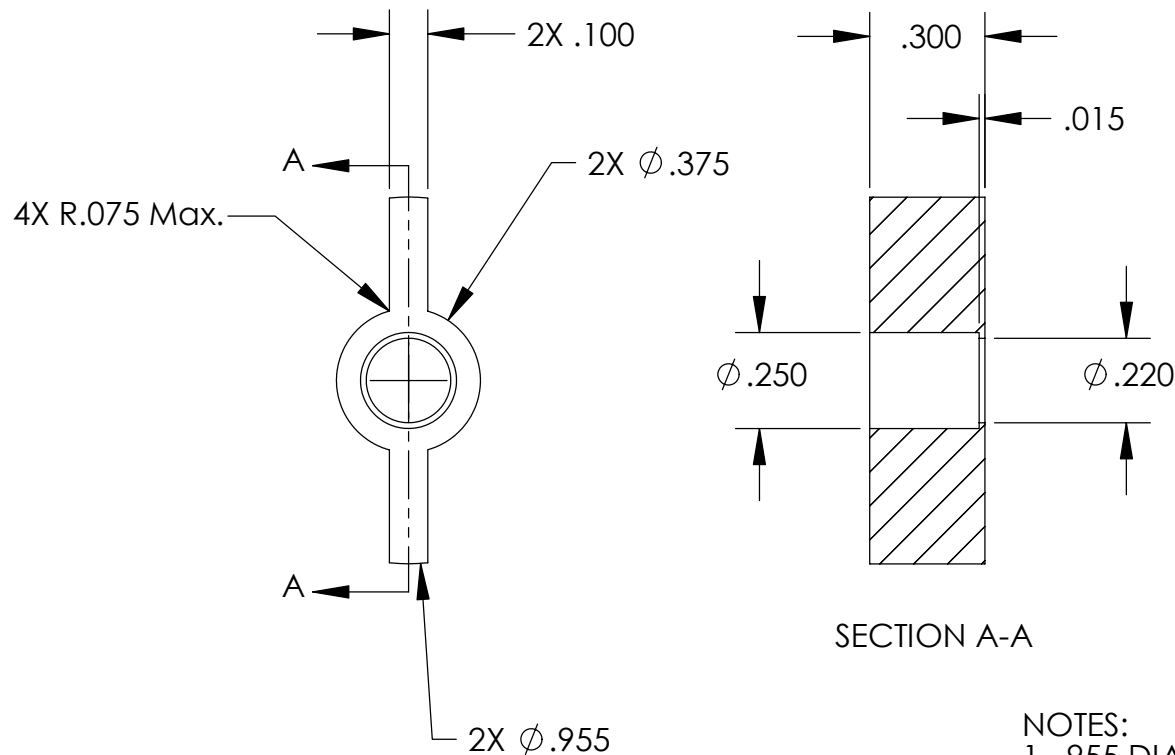


REVISIONS		
REV	DESCRIPTION	DATE



SECTION A-A

NOTES:

1. .955 DIA TO FIT ID OF NW25 CENTERING RING.
2. .250 DIA TO FIT OD OF P/N -133.

UNLESS OTHERWISE SPECIFIED:

DIMENSIONS ARE IN INCHES
DECIMAL TOLERANCES:

.X ±.030 .XX ±.015 .XXX ±.005

ANGULAR TOL: ± 1° SURFACE ROUGHNESS: 63/√

INTERNAL AND EXTERNAL SURFACE
INTERSECTIONS SHALL BE UNIFORMLY
FINISHED WITH CHAMFER .005/.010 X 45°
OR RADIUS .005/.010.
CHAMFER ALL THREADED HOLES 110° OF
MAJOR DIAMETER X 45°

MATERIAL: **304 SST**

FINISH: **NONE**

High Precision Devices

1668 Valtrec Lane, Suite C, Boulder, Colorado 80301
Phone: (303) 447-2558 Fax: (303) 447-2548 Web Site: www.hpd-online.com

TITLE: **p02101-133 hanger, pot disk**

CONFIGURATION: **00-Default**

SIZE	QTY PER ASSM:	SCALE:	SHEET	OF	REV
A	1	2:1	1	OF 1	A
DATE:	5/26/2004	DRAWN BY:	C. Danaher		